



創見資訊股份有限公司
Transcend Information Inc.

No. 70, XingZhong Rd.,
NeiHu Dist.Taipei, Taiwan, R.O.C
TEL: (886) 2-2792-8000
FAX: (886) 2-2793-2222

User's Manual

SSD Firmware Update Utility

(Version 1.0)



- **Revision History**

- Rev. 1.0 (2011.05.06): Preliminary specification

Notes:

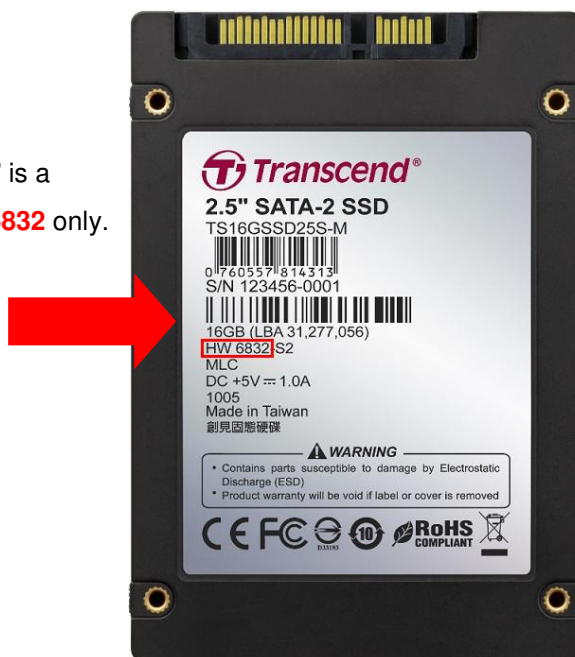
1. This firmware update tool is only suitable for use with Transcend SSD models **TS 8 / 16 / 32 / 64 / 128 / 192GSSD25S-M , TS 8 / 16 / 64GSSD25S-S , TS 32 / 64GSSD18S-M with HW 6832** .
2. A DOS-bootable device is needed to run the Firmware Update Tool.
3. Using this tool will **erase all data** stored on your drive. Please back up your data before starting the firmware update procedure.
4. You can only upgrade **one SSD at a time**.
5. If you experience any problems during the firmware update procedure, please see our technical support page at www.transcend.com.

I. Introduction

The Transcend SSD25S Series Firmware Update Utility" is a MS-DOS F/W installation tool for SSD models with **HW 6832** only. Please verify your HW version before you start.

What the Utility Does:

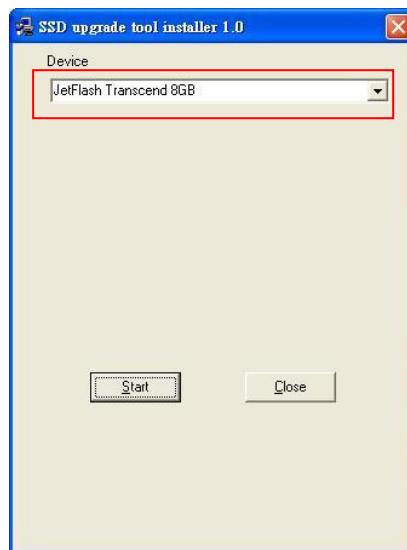
- Automatically builds a bootable USB device
 - Copies the ISP tool into the bootable device.
 - Updates F/W code and revision information
 - Implements ATA download microcode command
- (No factory mode jumpers required)



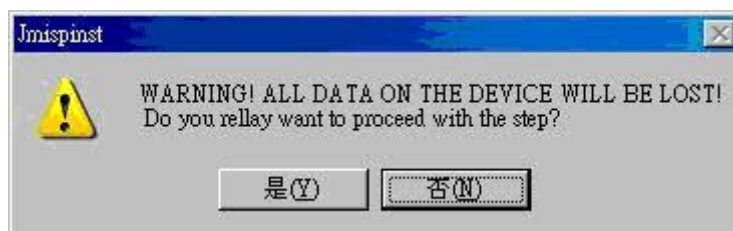
II. How to Use the Firmware Update Utility

Reminder: Backup all user data before running the firmware update.

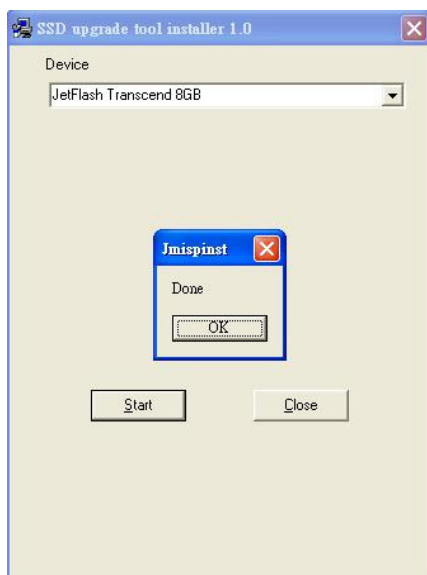
1. Connect a removable USB storage device to your computer. Make sure the USB storage device is empty, or that you have already made a backup of any important data on the drive.
2. Execute "JMISPIInst.exe" and press "Start." **Make sure the "Device" listed is the USB storage device you just connected.**



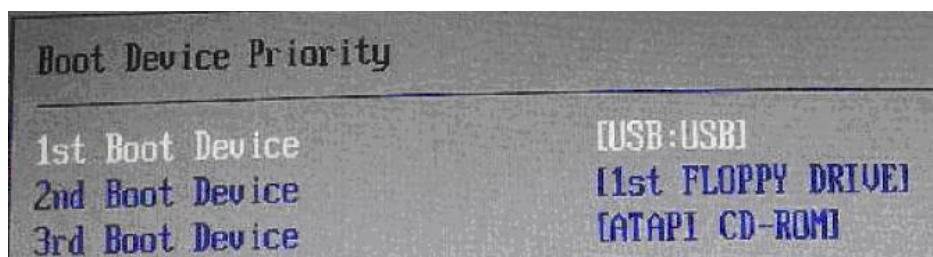
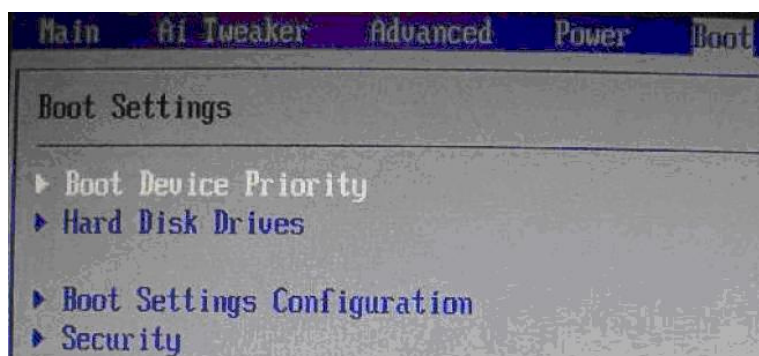
3. A warning message will appear. If you are sure the contents of your USB storage device can safely be erased, press "Y". If your USB storage device contains valuable data, please copy the data to a different location first, or use a different USB storage device.

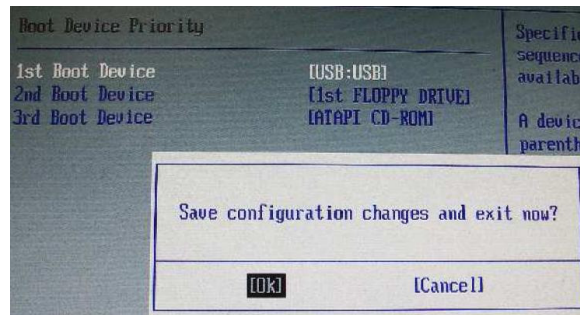


4. The program will then transform your USB storage device into a bootable USB Flash Drive that will automatically run the SSD firmware update process when you reboot your computer.

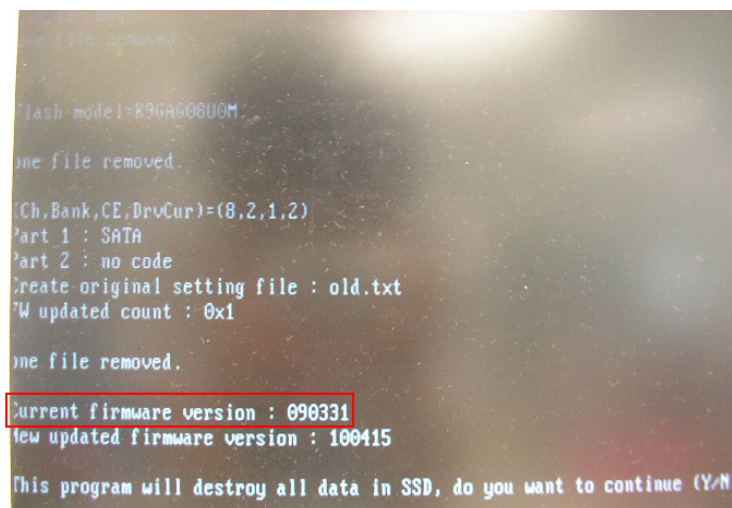


5. Turn off your computer and connect your Transcend SSD to the computer's connect port. Plug the USB Flash Drive you used in [Step 1] to an available USB port. Turn on your computer and press the DEL or F2 key to enter your computer's BIOS settings and change the Boot Device Priority. Set your USB storage device as the 1st Boot Device, then save the settings and exit the BIOS.

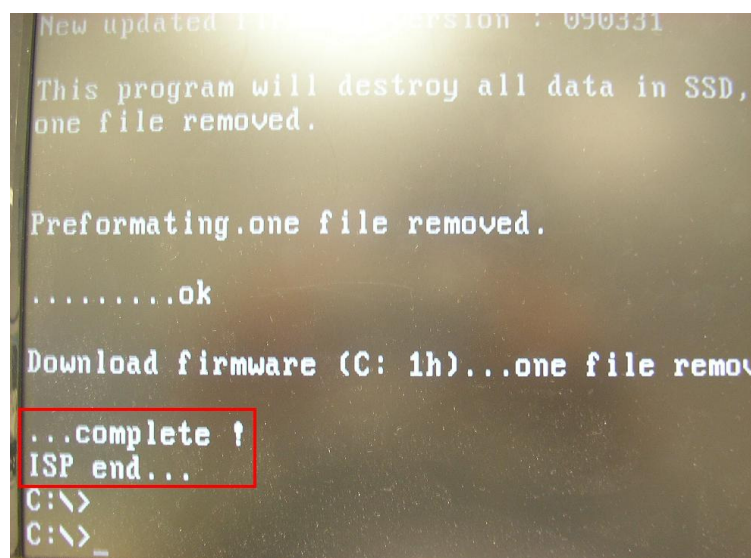




6. After exiting the BIOS, the computer will restart and boot from the USB storage device. After boot up, the tool will automatically detect Transcend SSD. The current firmware version will be shown on the screen once your SSD is detected. Press “Y” to start the upgrade procedure.



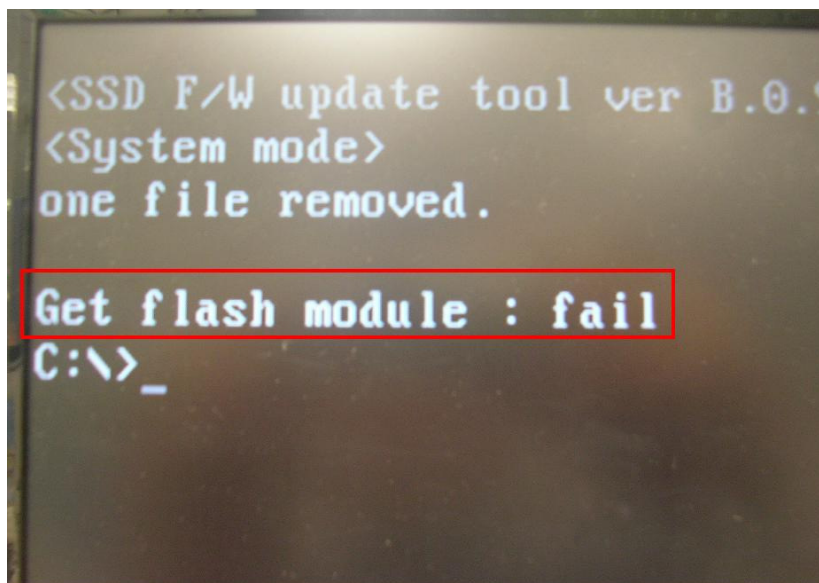
7. Once the firmware update process is complete, a “**complete ! ISP end...**” message will appear.



8. Reboot your computer, then back to [Step 5]. Set your system disk as the 1st Boot Device, then save the settings and exit the BIOS.

III. Error Message

1. If wrong P/N SSD is connected, it will show " **Get flash module : fail**".



2. If storage device configure as AHCI mode, it will show " **No recognised SSD device!**".



If you have any questions or problems regarding Transcend's SSD25S Firmware Update Utility, please visit the technical support section of the Transcend website www.transcend.com